

Salvia News

NUMBER 74



Official Newsletter of the
Victorian Salvia Study Group

www.salvias.org.au

Summer 2018 / 2019

THE VICTORIAN SALVIA STUDY GROUP

THE AIMS OF THE SALVIA STUDY GROUP ARE:

1. To grow and collect Salvias for the purpose of enjoyment and study
2. Promote and encourage the growing of Salvias
3. Correctly name existing and new salvias
4. Maintain our Display Garden at Nobelius Heritage Park for the Group & the general public
5. Manage our website and Facebook page

The Group is a Not for Profit Organisation. Any monies received are used to run the Group's activities and for the planting and maintenance of our GPCAA (Garden Plants Conservation Association of Australia) registered garden collection. ('Plants Trust' has been a shortened, more comprehensive name for the GPCAAA and has been used for quite a while now).

GROUP CO-ORDINATOR	Lyndi Garnett 844 Highbury Road Glen Waverley. 3150 lgarnett844@gmail.com	03 9803 4534
ASSISTANT CO-ORDINATOR	Jillian Barkell	03 9756 6361
SECRETARY TREASURER	Heather Lucas Gordon Donaldson	03 9879 5365 0411 111 979
SUBSCRIPTIONS	Meg Gadd gm1214.gadd@gmail.com	03 9584 8005
GENERAL COMMITTEE	Norm Winn Andreina Chinn	0438 733 060 03 9897 3031
EDITOR	Beth Gilchrist editor.salvianews@gmail.com	0448 940 070
SUB EDITOR & DISPLAY CO-ORDINATOR	Jillian Barkell	03 9756 6361
PR - includes email updates to members	Fiona Williams	0417 323 785
FACEBOOK	Patrick Hogan patrick.hogan@optusnet.com	
SEED SUPPLIER, PLANT SALES & ENQUIRIES	Lyndi Garnett	03 9803 4534

The views expressed by the contributors of this publication are not necessarily those of the *Editor* or the *Committee* of this Study Group. While every effort is made to publish reliable information, the use of the information is at the discretion of the individual. The Victorian Salvia Study Group takes no responsibility for statements made or opinions expressed and it does not offer treatment or advice.

SALVIA NEWS SUBMISSIONS

Copy deadline for the next edition is on or before 17 January 2019

Please post your copy to:

Beth Gilchrist - Editor 'Salvia News'
13 Williams Street,
Temora NSW 2666

OR email:

editor.salvianews@gmail.com



SALVIA NEWS

VICTORIAN SALVIA STUDY GROUP

Website: www.salvias.org.au

Welcome to our Summer edition of Salvia News. Another new season, another year almost past.

While working on this edition of Salvia News, it is fantastic to be able to share that we had 22.8 mls of rain a few days ago including an electrical storm that appears to have damaged the 4G network and I, like many others, have been without the 4G network for a couple of days. How difficult it is these days when our internet is disrupted, how quickly we have come to rely on our electronics for every day living. Temora and its surrounds is such a windy place so even with the rain, its not long before everything is very dry again. We have been in Temora for 2 years now, learning to live with extremities of weather, make changes to a new garden to assist with micro climates that may help everything survive, fruit and vegies to provide fresh produce for eating and sharing, trees to provide shade and protection, flowers to make us smile and grass to give us hope and relaxation. Hope others too have received some much needed rain. It has certainly been another year of extremities for so many.

We lost our special Cavalier King Charles Spaniel to cancer. On the advice of the local vet, we bought a new puppy to help Oscar enjoy some quality of life. His life was extended some months but when he passed, Mischief our Beaglier (Beagle x Cavalier King Charles Spaniel) grieved deeply and needed medical intervention. We took her along and bought a Shiranian (Shih Tzu x Pomeranian) we call Jack. Mischief's mother instincts took over and they have been inseparable ever since. Mischief is now 9 months and Jack is 3 months old. Mis-

chief is still often lost but no longer gets that haunted look that hurt so much. Their antics have us laughing every day. Just wish that she could teach Jack that we don't need help with digging and pruning in the garden. How quickly we forget how much time they need to learn, or to teach us what they expect of us!

The VSSG is now working ahead in its own right, the 'Rules' have been completed and registered, and are now available for members interested, just call Lyndi. VSSG may even be 'Incorporated' before this newsletter reaches your letterbox it is well on the way.

As a once off, because of the changes, we have printed the AGM Minutes which you can find on pages 17-19

A new range of Salvias by Ball Australia are now available, check centre pages 12/13.

Favourites, News from Gruyere, page 5; Perennial Poppy's Group from SE Queensland presenter for this issue is Kristen Mathews, pages 7/8.

These and many more articles are inside for your pleasure.

I wish to take this opportunity to thank all those who have written for Salvia News this year for without them there wouldn't be a newsletter. Look forward to hearing from you all for the coming year.

Don't forget the VSSG Christmas Luncheon on Sunday 2 December at North Warrandyte.

And finally, wishing you all a safe and happy Christmas Season.
Until next year, happy gardening
Beth Gilchrist

INSIDE.....

Calendar of Events	4		14
News from Gruyere	5	Visit to July Percy's Garden, Croydon	15
Mail Order Shopping Order Form	6	Garden Progress in Temora	16
WANTED - New Subscription Officer	7	AGM Minutes	12-19
Salvias in Burgpengary East, SE Qld	8/9	Members Lunch at Nobelius	20
Elly Roo's Lemon Tree Cottage	10/11	New VSSG Membership Form	21
Letters	11	Salvia Presentation in Temora NSW	22
New Mirage Range Salvias, Ball Australia	12/13	A Manual for Salvia Growers Order Form	23

Salvia News **COPY DEADLINE** Autumn-

17 January 2019

Calendar of Events

Remember to check the website regularly for any changes and additional information.
www.salvias.org.au

Remember too to take your plant lists to events or email your list to Lyndi prior to the event to ensure you don't miss out. Should you have any queries, phone Lyndi Garnett, VSSG Co-ordinator on 03 9803 4534 or email lgarnett844@gmail.com
Also don't forget to let Lyndi know if you are attending events. Some events the hosts need to know numbers prior to the event.

In addition to events open to the public, on the **website under Calendar of Events, you will find Garden Clubs where Lyndi Garnett is speaking** and a contact number for further information.

Nov 18 Sun 11.30-3pm

ANNUAL SALVIA PLANT SALE AT NOBELIUS, EMERALD

Nobelius Heritage Park, Crighton Road, Emerald

- under the Packing Shed, along the Puffing Billy line **Mel: 127.G4**

Annual Event NOT to be missed. Wander the gardens and see how the Salvias grow. Great bargains to be had.

Don't forget to take along your list of Salvias you have been seeking all year. Take along your plants to be identified

Dec 2 Sun 11am

SALVIA CHRISTMAS LUNCH

65 Glynn Road, North Warrandyte

Mel: 23.A8

This is the home of Fiona Williams, PR Officer She tells what a great time was had by all last year; that we are doing it again, same venue, lots of space, lots of garden, plenty of parking, masses of plants and even more cuttings. Everyone brings a Christmas plate to share and we feast. Then she serves various fruit liqueurs that she made during the year, and she says 'we taste and feast again'. Everyone is welcome, partners, children also welcome. There is plenty of garden to visit even for those who may be unsteady on their feet.

Please ensure you let Fiona know you are coming 0417 323 785

Its sure to be a great day, please join us!

CHRISTMAS & NEW YEAR CHEERS

It's been an exciting and very busy year with the changes to the Group. The Incorporation of the VSSG is still being finalised as this goes to print. Committee Meetings are held approximately every 2 months, and they have been fruitful with as much of the paperwork being completed as possible, so that we can get back to what we are here for.

Jillian and I together with all of the Committee thank you very much for your support during this period of change. We also thank you for your membership and interest, coming to the different events on our calendar throughout the year. We would like to see more of you visit the Salvia Display Garden at Nobelius. It really is worth the trouble.

Its Christmas time again. Hopefully we will see many of you at the Christmas Luncheon on 2 December. Its always a special day.

We wish you a happy Christmas and a better 2019.

Lyndi & Jillian

Notes from Gruyere

Salvia News Summer 2018 / 2019

Meg Bentley, Gruyere Vic

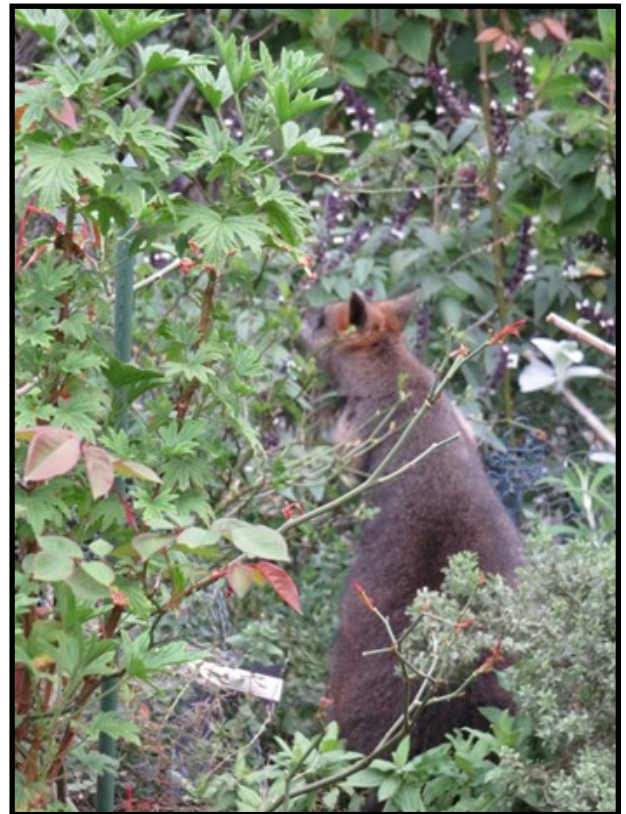
My how time flies and you're not always having fun!

It has been a very cold Winter and like most, we too were bitten by the frost, even in areas where frost hasn't been before. That is quite understandable since the large old conifer came down. Storm damage, winds and lack of rain are not only felt here in Gruyere but throughout many areas of Victoria and further afield. But in between times of clean-up the gardening does get done. Propagating and potting up more salvias has been achieved and various pruning jobs have been attended to.

The pruning has been done with the help of wallabies and deer, especially the roses this year...

Mind you, most of the pruning has been done with the help of wallabies and deer, especially the roses so this year I should have a glorious amount of blooms, thank goodness the salvias aren't touched. I haven't had to mow the grass for months on end, thanks to the rabbits and kangaroos. There are many instances where we might complain about the intrusion of the 'wildlife' but I am always grateful to these little helpers.

Some of the salvias that are in the process of propagation are the hardy ones, *Salvia aurea* 'Green Ginger', *S. aurea* 'Silver Lady', *S. schlechteri*, *S. lanceolata*, *S. dolomitica* and *S. fruticosa* 'Greek Skies'. One very interesting salvia that I would love to see more of is the rare *Salvia bullulata* which has the most unusual flower colour for a salvia of turquoise blue. This colour is hard to match up or to complement others except perhaps white or pale pink flowers. It does like a part shaded position and be 'snuggled' in amongst other plants without over crowding. These past weeks I have been able to plant out quite a few salvias into a little garden just for the 'specials' and these include *Salvia indica*, *S. eigii*, *S. interrupta*, *S. spinosa* and *S. judaica*, so I hope they do well over the coming Summer months.



I think that because we have had a rather dry season there is a possibility that we won't get a good rain until Autumn, unless of course there's a chance of a good Summer downpour. Mulch and more mulch will have to do to conserve the little moisture there is and hopefully we will all have a safe 'fire free' summer.

MAIL ORDER SHOPPING

(postage prices within Australia)

Also Great Christmas Gift Ideas



A Manual for Salvia Growers

By Meg Bentley

\$30 per copy **Plus** \$10 per copy posted

Order form for this item is on page 23 of Salvia News

Salvia Cards - Meg Bentley



\$10 per pack (5 single flower or 5 assorted)
Plus \$2.50 per pack posted

..... Assorted packs
or Single Flower packs -
..... *Salvia patens*
..... *Salvia roemeriana*
..... *Salvia microphylla* var *neurepia*
..... *Salvia gesneraeflora* 'Tequila'
..... *Salvia leucantha*
..... **Total packs @ \$10 per pack** \$.....

Plus \$2.50 per pack posted \$

The New Book of Salvias

by Betty Clebsch



\$15 per copy **Plus** \$10 per copy posted
..... copies @ \$15 per copy \$.....

..... **Plus** \$10 per copy posted **\$.....**

TOTAL COST OF ORDER **\$.....**

Please make cheques payable to 'Victorian Salvia Study Group' and send remittance together with completed form to:

Salvia Study Group
844 Highbury Road,
Glen Waverley Vic 3150

Enquiries to Lyndi Garnett (03) 9803 4534

PLEASE PRINT

Name:.....

Address:

.....State: Post code:Phone.....

Email:

WANTED

NEW SUBSCRIPTION OFFICER

Our wonderful Subscription Officer, Meg Gadd, has advised Lyndi that she will be retiring from this position at the end of the year. We are therefore seeking someone who would like to take on the volunteer position as are all positions at VSSG, of VSSG Subscription Officer. Below is an outline of what is involved. It's a great way to meet people and become as active a member of the new VSSG as you wish to be. You would certainly be made very welcome!

Should you have any queries, or be interested in the position, please telephone Lyndi Garnett on (03) 9803 4534.

Job Description for the position of Subscription Officer for the Victorian Salvia Study Group

- Maintain the database of subscribers, (Excel spreadsheet), both for hard copy members and online members, including additions and deletions, change of address, changed phone numbers, etc.
- Bank cheques, check Bank Statements regularly online to see if subscribers have paid their subscriptions direct but have not sent in a Renewal Form or emailed details to the Subscription Officer
- Print off address labels, 4 times per year, and print lists of hard copy subscribers, which are posted to the Assistant Co-ordinator, Jillian Barkell, who then posts out the Salvia News to members.
- Email all Online subscribers the link to access their Salvia News when it is available.
- Print Renewal Forms and reminder notices when subscriptions are due for the upcoming year, or have not been received and are overdue. Email online subscribers these forms and notices.
- Answer queries by phone or email when members make contact.
- Attend Committee Meetings when possible, and give a Report on membership and changes or concerns, in person or by email, to the Secretary or Co-ordinator. Make a contribution to the discussion at these meetings, or by email so that the Group continues to grow and promote the enjoyment of Salvias.
- Liaise with Committee Members, such as the Co-ordinator, Assistant Co-ordinator, Secretary, Editor of the Salvia News, and the Publicity Officer, to keep them up-to-date with new members and changes that have occurred.
- Purchase address labels, A4 envelopes, A4 copy paper and plastic pockets for sending printed lists and labels to the Assistant Co-ordinator.
- Have access to a computer or laptop, a printer, and an Internet connection.
- If possible, attend some of the Calendar Events, and help out at some of the Salvia plant sales and Nobelius gardening days.

We really do need your help; it may sound a lot but there is support from the Committee and it is a great way to become more involved and meet some great people.

Please telephone Lyndi Garnett on (03) 9803 4534.

Salvias in Burpengary East, southeast Queensland

by Kristen Mathews



L to R *Salvia* 'Cupie Doll', *greggii alba*, *Ballerina*, *Edna Hardman* and *Pink Marshmallow*

Continued next page ...

LIKE US ON FACEBOOK

Check out the Salvia Study Group on Facebook.
Thanks to Patrick Hogan, VSSG is now on Facebook.
Any queries Patrick can be contacted by emailing;
patrick.hogan@optusnet.com

Salvias in Burpengary East, southeast Queensland

by Kristen Mathews

My mother and I have been growing salvias in southeast Queensland for twenty years. The first ones we grew, like everyone else, were the old faithfuls, purple and red *Salvia splendens*. Boy, haven't we come a long way since then.



Salvia 'Mac Shann'

Around 5 years ago, we moved from acreage to a 610m² block. Thinking we would have to scale things down quite considerably, we sold most of our terracotta pots, bringing only twenty of them with us. At the time, this seemed quite ridiculous. Where on earth would we fit all these pots? Well, five years down the track we now have sixty or more pots, planted mostly with salvias, placed strategically about our garden.

In addition, we have twenty or so in the ground, a few of the medium sized ones including *Salvia* 'Purple Majesty', *S.* 'Joan', *S.* 'Waverly' and *S.* 'Ice Princess' (formerly *S.* 'Coconut Ice'). These salvias provide the perfect backdrop for lovely huge white heads of our *Hydrangea* 'Annabelle', the stunning dark cerise of *Clematis* 'Niobe' and a mixture of statice, forget-me-not, shasta daisies and poppies. Another salvia, supposed to grow to 1.2m, is *Salvia* 'Amistad'. We had this in the ground against a side fence and it was beautiful. Unfortunately, it grew to well over 2m tall and was often covered in mealy bug. We decided to take it out and tried one in a pot placed where it receives better air flow. So far it is very healthy with no sign of mealy bug, so fingers crossed.

Because our gardens are quite full, using salvias in the pots gives us another layer and more room. We grow around forty microphyllas and greggii, in pots. We find these smaller growing salvias perfect as potted specimens. In warmer weather, they are more labour intensive needing to be watered every day or two, depending on how hot it gets. But this small 'negative' is soon forgotten as they produce a stunning display of flowers. We fertilise every 8 weeks, with Eco 88, Organic Xtra or Osmocote, one handful in each pot. The garden has a foliar feed roughly every 2 weeks, rotating Seasol and Powerfeed. In our experience, to keep potted salvias looking neat and compact, they need trimming by about a third, between flowering of course. This produces lush growth and more flowers.

There are so many new small salvias on the market these days and I would like to mention a couple of my favourites. *Salvia* 'Lemon Delicious' as the name describes is a beautiful lemon yellow. It is the first of the small yellow flowered salvias to be resilient in our garden. Other yellow varieties we have tried, have all died. *Salvia* 'Angel Wings' needs no explanation really. I am sure we all have one in our garden, and likewise *S.* 'Mrs Bucket'. Last but not least a newbie on the market is *S.* 'Cupie Doll', a true bi-colour with the lower lip, pink and the lower lobe, cream. This is a sport of *S.* 'Martine' and has been growing in our garden now for 2 years and is doing very well.

The Perennial Poppies Group Inc.

ELLY ROOS 'LEMON TREE COTTAGE'

Heather Lucas – Heathmont Vic

What a garden, what a wonderful day, what great food, what a great turn out and great fellow garden lovers and lastly but not least, what an absolute power house, wiz in the garden and great person Elly Roos is (oh and of course let's not forget hubbie, Leon).

This garden I have been to many times before and it never ceases to delight and provide ideas for one's own garden. So this visit was on Sunday, 23rd September at 11 am, with a turnout of around 25 people and all bringing a great array of food that was enjoyed by all.

The front of the house has a side gravel driveway leading to a carport through which you enter into the back garden. On the other side in the front garden is an area that has 2 entrances (one small white with light grey



Front of house & garden

roof garden arbor/ arch from the side of the driveway and one beautiful garden entry arbor with little roof housing structure, with picket fence) with a circular garden bed surrounded by a circular pathway of gravel and slate stepping stones and outer garden beds on the sides. Outside of the picket fence on the front verge/roadway is another garden bed filled with various bulbs, a rose and various other plants. Two salvias that stand out in the front garden is a really prolific *Salvia Rubiginosa* and a won

derful *Salvia Canariensis*, with its silver grey felt foliage an absolute delight. The back garden is comprised of several pathways which wind downwards on both sides and the middle of the garden, which has a quite a severe downward slope, but with several terraced areas making it not seem so at all. The middle pathway which starts from the house has several beautiful tiled/mosaic steps with pots and interesting plants adorning each side as you step downwards. Also down this middle pathway are several wonderful maroon arches/arbors.

Elly and Leon's garden is not just a garden of plants, but also a wonderful combination of arches, structures, ornaments, mosaic artwork and garden steps/terraces. New to me this time were several cages that Elly has placed around her fruit trees to stop predators from eating her fruit.

Elly is blessed with wonderful soil in her garden, so it was no surprise that her salvias seemed to be growing with steroids!! There was a *Salvia Pale Pink Disermas* in full flower, which was quite different to a *Salvia Pink Disermas* further down the back garden past the vegetable garden which was extremely floriferous.

Elly also has several quirky and interesting items in the garden, amongst them a bicycle which has been painted hot pink with several stone ornament dogs in the wire basket on the front handle bars, an emu or is it an ostrich stone head ornament, an old wooden chair painted lilac pink with a plant growing up through where the seat once was and even an old rusted Bonita sewing machine.

Continued on page 11 ...

ELLY ROOS

'LEMON TREE COTTAGE'

Heather Lucas – Heathmont Vic

.. Continued from page 10

With the many ornaments and areas of seating (benches), this garden was indeed a delight to behold.

We all (salvia fanatics) at some time realize that there are other plants to be admired and collected and Elly has now got a very superb collection of succulents. Most of her succulent collection is on her back verandah, all in lovely pots (big, small, terracotta, glazed, etc) on plant stands, shelving against the back wall of the house and lining the front edge floor of the back verandah.

Then to top of a lovely day, there were a couple of trays of plants that Elly had propagated for us to choose one or two to take home with us.

Many thanks Elly and Leon for a wonderful garden and day.

Till next article, happy gardening.



Salvia Pink Disemas

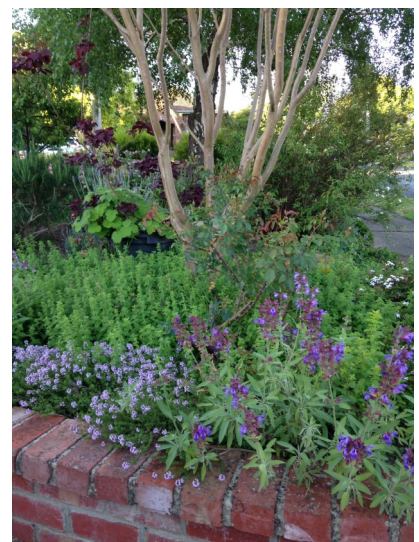
LETTERS

I live in Camberwell on a small suburban corner block. I'm a Herb Society member who was made aware of salvias one day at a Macedon fair. Trudy Fry was having an event some weeks later and I cheekily gate-crashed - met lots of original or near original members and have been to lots of gatherings including the odd working bee since then. I think it's great the Salvia group is going it alone. Probably won't be so different!

I love reading the Salvia News. You do a fantastic job producing it. I've got many salvias but am currently rearranging my garden after having lot of plumbing done - sewerage and storm water. Very messy.

Spring is such a great season except when it's windy! Hope you are able to get out into the garden too.

Heather Davies
Camberwell Vic



NEW RANGE—

greggii / microphylla Salvias from Ball Australia

These flowers are the new 'Mirage' range of greggii/ microphylla 's from Ball Australia. These are all PBR meaning Nurseries stocking these varieties have to buy them in as plugs and be licenced to grow them on. Of course if people want these varieties, they may have to ask their local Nursery to order them in.



Lyndi Garnett is pleased to be able to share photos of the new range and advises that she has looked at each plant closely and they all seem to be slightly different from what is already available. It may be a brown calyx, or a very thin microphylla leaf, or no white throat in the Burgundy and Hotpink - little things make them different.

Left: **Mirage Burgundy**

PHOTOS OF NEW MIRAGE RANGE BALL AUSTRALIA



Left: **Mirage Deep Purple**



Mirage Hot Pink

NEW Mirage Range
greggii / microphylla Salvias
 from Ball Australia



Mirage Soft Pink



Mirage Soft Pink

Potted Mirage Radio Red with insert close up



Mirage



Herbaceous Salvias at Lang Lang

Lyndi Garnett, Glen Waverley

I delivered the first of our herbaceous (winter dormant) Salvias to Lesley Edmonds early in October this year, to her farm at Lang Lang in Gippsland which is on the opposite side of the Princes Hwy from Jindivick.

As most of us are running out of room in our gardens and Nobeliuss is filling up fast, I was so glad that Lesley accepted my suggestion of her holding a collection of herbaceous Salvias in a small strip in her magnificent vegetable garden. (Lesley provides vegetables and berries for a local organic outlet).

The herbaceous Salvias are a forgotten area within the Group of which we should be ashamed. That is easily done when you have plants that go down for winter, and often don't come back up, it's easy to forget them until they miraculously begin to show themselves in spring.

I keep all my little treasures in pots so I know where they are, I don't accidentally dig them up and I can keep an eye on those ferocious slugs enjoying midnight snacks on my precious plants, but like everyone else I am running out of room.

Apart from the more readily grown varieties such as 'Ostfreisland', 'Snow hills', 'Blauhugal' etc., many of the more unusual species are very slow to increase in availability. Most of these Salvias are seed raised, taking about a year before we can produce a saleable plant. Some of these e.g. *S. bowleyana* produce only one or if lucky, two stems from which you can take cuttings (one cutting at a time), while others you have to hope they flower and get pollinated to produce enough seeds to sow. If you are lucky enough to have a large plant where you can take offshoots, these are an easy way of taking cuttings, beginning new plants, especially of the more commonly produced varieties. So increasing stock to share is a slow process. That is why so many of these Salvias are not readily available.

I had taken down a variety of these Salvias, collecting as many older varieties as I could from as many Nurseries that I could find that produced these type of Salvias.

There were also a number of pots with no names that were found at markets, raised either by seed or by cuttings, all with the ambiguous name of *S. nemerosa*. Who knows what they might be.

I also took down a collection of the new range of herbaceous Salvias produced by Ball Australia. These are a more compact version of the previous varieties that we are familiar with.

Lesley's aim is not only to hold a collection of herbaceous Salvias but also the very important task of comparing all these more familiar varieties. I'm hoping Lesley can compare the new varieties with the old to see if there are any differences or if it's a case of "same plant, different name". Of course there are always the names of 'Snowhills' & 'Schneihugal' - is there any difference?, 'Blue hills' & 'Blauhugal', are they the same or is the colour blue different?. Is the 'Dwarf Blue Queen' different from the new compact form of 'Blue hills'? etc, etc..

Of course as more varieties become available, these will be added to the collection, at least this is my excuse to go down to visit Lesley, see the collection and see her vegetable garden.

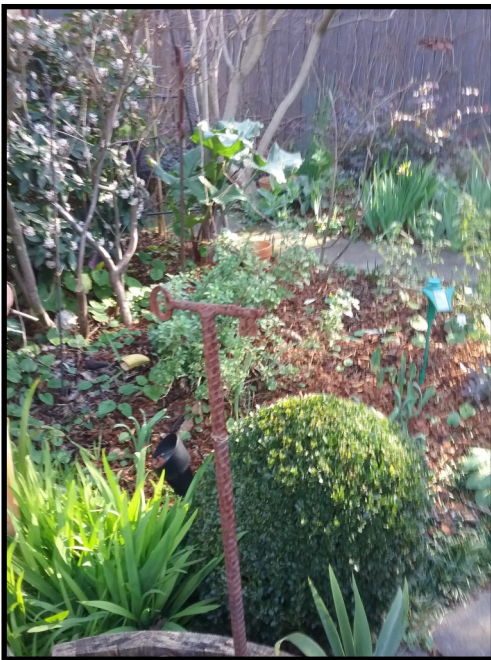
We are hoping to place Lesley's garden on our calendar of Garden Visits later next year. We were actually supposed to visit Lesley's garden last year, but unfortunately that was cancelled due to family commitments. This visit certainly won't be cancelled. I'll have it on the website and in our Salvia News with a mud map of directions.

Visit to Judy Percy's Garden, Croydon

Andreina Chinn, Mont Albert North

On June 22, on a lovely, sunny day, about 20 of us visited Judy Percy's garden in Croydon. The pretty front garden, with its many winter-flowering plants, was bright and cheery, and a fitting introduction to what was to come. Over to the side, our first surprise was spotted by Lyndi - a clump of flowering *Galanthus nivalis*, the true snowdrop, their shining, vivid-white blooms gleaming in the sunshine.

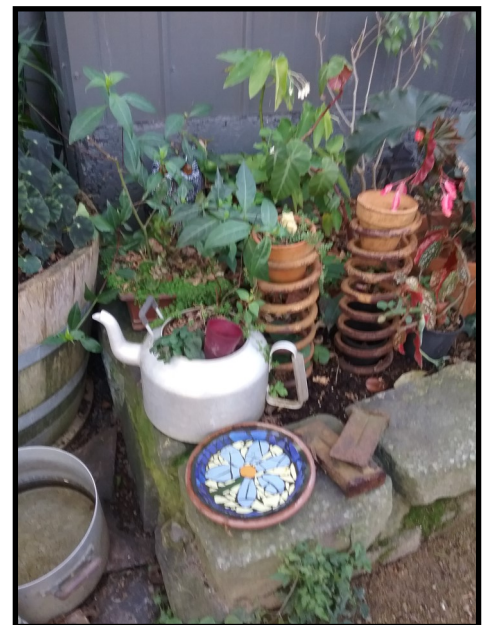
Sprinkled throughout both front and back gardens were several large "odora" and "eternal fragrance" *Daphne* bushes whose heady, sweet fragrance announced their presence even before they came into view. And almost as delightful as the wonderful perfume was the visual impact created by the masses of flowers covering each bush.



Judy's large collection of cyclamens, which she grows in pots of every size and style, were all at their flowering best. A few added brilliant pops of colour to the front garden, but the majority were in the back garden. Their variety of hues and subtle differences of leaf form were talking points, and we were particularly taken with the rare coum, a small, dainty type with tiny, bright-pink flowers.

As would be expected, Judy has many *Salvias* most of which were flowering profusely when we last visited the garden in May 2015. There were some in flower on this visit, including Timboon, but the majority were having a winter rest, getting ready for their glory days in spring, summer and autumn.

Judy's garden is proof that what many people would regard as disposables can, with imagination, be turned into quirky, garden items. Using pieces of old building materials, old found objects, industrial pieces, old utensils and tools, etc. and with the help of her on-the-tools husband, Ian, Judy repurposes or combines them to produce unusual garden furniture, decorations, sculptures and plant containers. Judy has also incorporated her own mosaic art, in the form of colourful tiles, birdbaths, table tops and sculptures, into the garden design. Together, the upcyclables and mosaics provide extra texture and interest to the garden and make it a fascinating space to explore.



The result of Judy's gardening and creative skills is a playful, lovely garden which has a different, eye-catching surprise at every turn. Thank you, Judy and Ian, for opening your garden to the Group, for your generous sharing of information and knowledge and for the cuttings and plants most of us left with. We all had a wonderful day, and came away with a different perception of what constitutes junk!

GARDEN PROGRESS IN TEMORA

Beth Gilchrist, Temora NSW

Temora is a lovely country town, a farming community with extremities of weather including very strong winds, minimum temperatures as low as minus 6 and maximums up to 46 degrees in the shade. The soil is heavy red clay and lifeless, requires lots of compost and manures and of course is an ongoing job.



By the time you read this we will have been in Temora for two years. We had a clean slate to build out garden, an odd shaped block with almost no backyard. After replacing the rotary clothesline for a fold down and moving it to give us more space, we have built a small courtyard at the rear together with a hot house (aptly named). Along one side it now includes 2 water tanks, a shed and fruit and vegie garden. We needed more space this year to grow pumpkins so we purchased a few bails of straw and planted directly into the bales after added potting mix, rock dust and blood and bone. I read about it some years ago, don't quite remember the details but it seems to be working, as everything is growing.

We also have berries, fruit trees, and above ground vegie gardens . Unfortunately, this Region now has

Queensland fruitfly and it is imperative that it is managed properly. Considering I am not as active as most, we cover the trees and most garden beds with vegie netting. It needs to be checked preferably daily and dealt with immediately if fruit fly is around or anything else causing a problem. This year we have tomatoes, zucchinis, capsicum, lettuce growing in the hot house. We now have a special cover to help prevent anything growing in the hothouse from cooking over the hotter months. There is electricity to the hothouse which means we also use a fan to assist with air flow. Fingers crossed its better than last year.



We desperately need shade and have planted a number of deciduous trees including in the front yard where our main flower gardens are, a mature Manchurian Pear, adding a second and even larger one a few weeks ago. The garden layout is completed for now at least...Norman is pleased as he digs the large holes for me, he does such a good job why would we seek anyone else (?) and its time to fill the gaps. Planting Salvias means that the ground gets covered more quickly. They look great with roses, bulbs, lavender, bearded iris, even natives. I love them on their own too but need something as a framework especially in the wind. At the time of this Salvia News being completed, we have finally had some rain 22.8 ml bringing the years total at 21 October to 275.4 mls. This rain arrived at the same time as it started to warm up, the roses are starting to bloom, many of the now over 100 salvias are coming into flower and the lawns burnt from the frost - we went over 2 months without the grass needing cutting - make it all come together. This means we don't notice the lack of growth, that there is still fencing on show. The garden is a buzz with bees and the birds are chirping all day long. It's a pleasure to be outside tending to whatever needs doing. The garden is heavily mulched but the wind and two puppies move a lot of it. It will be done again shortly in the hope we can get through the summer months just around the corner without too much damage or loss.

VSSG ANNUAL GENERAL MEETING HELD ON SUNDAY, 29TH JULY, 2018 AT 11.15 AM.

Meeting held at the Salvia Display Garden in the Nobelius Heritage Park, Crichton Road, Emerald

As this meeting was the inaugural special meeting of the Victorian Salvia Study Group now fully independent, it was decided that the Minutes of the AGM as a once off would be printed in this edition of Salvia News commencing on the next page.

The new 'Rules' is too long for printing. It can be viewed by any financial member or if a copy is required please contact the Co-Ordinator, Lyndi Garnett.

PHOTOS: Heather Davies



VICTORIAN SALVIA STUDY GROUP
ANNUAL GENERAL MEETING
HELD ON SUNDAY, 29TH JULY, 2018 AT 11.15 AM.

(Meeting held at the Salvia Display Garden in the Nobelius Heritage Park, Crichton Road, Emerald).

Present: Lee Andre, Jillian Barkell, Andreina Chinn, Gordon Donaldson, Geoff & Jennifer Ellis, Meg Gadd, Lyndi Garnett, Brett Horan, Neil Keir, Heather Lucas, Judy Percy, Fiona Williams, Norm Winn and Di Joyce.

WELCOME TO ALL ATTENDEES AND APOLOGIES:

Lyndi Garnett welcomed all the attendees and noted that there were no apologies received.

2A. HALF YEARLY REPORT BY THE CO-ORDINATOR

Lyndi Garnett commented that the reason why we were having an Annual General Meeting was as a result of the Victorian Salvia Study Group resigning from the Herb Society, due to the fact that their Insurance wasn't able to cover all our subscribers. We have since found good coverage for all our subscribers and public liability with the Royal Horticultural Society's Insurance. Part of that Insurance coverage, meant that we should become incorporated. Part of that process was to adopt the Association Rules and have an AGM.

The Committee has recently been developing a Constitution (based on Association Rules) and a Privacy Policy for this purpose.

We need to send in the Consumer Affairs forms for incorporation, the proposed new Association Rules, audited Financial Statement and alter our bank account, noting that we will be trading under our own name (Victorian Salvia Study Group).

Lyndi also noted that we have been doing a lot of work at our Display Garden at Nobelius, cleaning out the plants, pruning, fertilizing and mulching the garden.

2B ANNUAL FINANCIAL REPORT BY THE TREASURER.

Gordon Donaldson noted the Treasurer's Report as follows:

Balance at Bank as at 29 July 2018 \$13,916.25
Profit for the Year - 1 July 2017 to 30 June 2018. \$1,753.67

Our books for the year have been submitted to the Herb Society for audit, as they have been in the past. This will be the last occasion we submit to the Herb Society as we are now an incorporated body and will need to have our OWN accounts audited .

Total revenue for the year was \$15,134.00, the majority of which came from the sale of plants.

Expenses for the year have been held at about the same level as previous years at \$13,380.00. The major expense categories were:

Purchases of plants, soils, pots, tags, etc.	\$4,300.00
Printing Salvia News	\$2,899.00
Printing other	\$2,102.00
Marquee and site hire	\$2,175.00

Motion: To approve the Treasurers and Annual Report.

Moved: Norm Winn Seconded: Meg Gadd

3. ASSOCIATION RULES.

Norm Winn commented with regards to number of people required by regulations to form a quorum at the Annual General Meeting or any General Meeting – that we make an alteration to the Rules and suggest we accept 5% of membership rather than the normal 10% of members.

Motion: That the Annual General Meeting or any General Meeting be conducted with a minimum requirement of 5% of our membership.

Moved: Norm Winn Seconded: Lee Andre

This has been adopted.

Motion: To adopt the Model Rules of Association for the Victorian Salvia Study Group, this will then become our constitution.

Moved: Lyndi Garnett Seconded: Andreina Chinn

Continued on page 19...

VICTORIAN SALVIA STUDY GROUP
ANNUAL GENERAL MEETING
HELD ON SUNDAY, 29TH JULY, 2018 AT 11.15 AM.

...Continued from page 18

4. CONDUCT ELECTIONS FOR THE COMMITTEE OF MANAGEMENT BY AN INDEPENDENT VOLUNTEER.

Lee Andre took over the meeting after the committee stood down. She thanked all the committee members for their work over the past year

Lee Andre read out the nominations received for the new committee.

Lyndi Garnett	Co-ordinator
Jillian Barkell	Assistant Co-ordinator
Heather Lucas	Secretary
Gordon Donaldson	Treasurer
Meg Gadd	Membership Officer
Beth Gilchrist	Editor of Magazine

General Committee:

Andreina Chinn
Norm Winn

It was noted that there were 2 more nominations for Co-ordinator and 2 more nominations for Assistant Co-ordinator; however upon contact with these people, it was noted that they did not wish to run for those positions.

Motion: To accept the new committee nominations.

All present at meeting approved same with show of hands.

Moved: Brett Horan Seconded: Neil Keir

Questions to the committee:

Jennifer Ellis wanted to know the number of committee meetings held each year. Lyndi Garnett explained that we meet approx every 2 months, arranging extra meetings as required when we have selling events to organise.

Meg Gadd wanted to know: Is there a minimum number of meetings that the committee members have to attend? Lyndi noted that they have to attend at least one meeting per year. If this is not possible, then we can organise contact with that member either via Skype or by open Telephone conversation.

Neil Keir asked if the membership fees were going to change. Lyndi noted that they would be staying the same amount as at present.

Motion: Fees for membership and 12 months subscription to the Salvia News to stay the same i.e. \$20.00 for hard copy posted and \$15.00 for online per year.

Moved: Neil Keir Seconded: Heather Davies

Lyndi Garnett went on to explain the Insurance coverage for the Group, which showed coverage of:

Policy 1: of Public Liability, anywhere in Australia, for death, bodily injury and/or property damage

Policy 2: coverage of Volunteer Workers - at any selling event or working at the display Garden at Nobelius.

Lyndi Garnett noted that the Insurance policy and the Rules of Association were on the table for anyone who wished to view them.

Motion: That the committee seek an appropriate auditor for auditing the financials.

Moved: Norm Winn Seconded: Meg Gadd

Meeting concluded at 12.40 pm.

MEMBERS LUNCH AT NOBELIUS PHOTOS: Lyndi Garnett

The VSSG Members lunch held at the VSSG Salvia Display Garden at Nobelius Heritage Park in Emerald, has become an annual event. This year it was held at the beginning of September which turned out to be a very cold day. New and old members are invited to a free lunch, a chance to meet with other salvia enthusiasts, have a look at what is happening in the Display Garden at this time of year and enjoy a great day.



Lunch and a hot cuppa was most welcome to help keep everyone warm on a beautiful but chilly Spring day in the Dandenong Ranges.



Victorian Salvia Study Group

NEW MEMBERSHIP

Includes Salvia News Subscription

NOT FOR RENEWALS

Any queries, phone Meg Gadd – see details below

Name :

Address :

Suburb/Town:State: Postcode:

Phone :Email:

Annual Subscription 1 year (4 issues)

Hard copy posted \$20.00

On-line \$15.00

☐

Subscribe for a Friend

☐

Name:

Address:

Suburb/Town: State:Postcode:

Phone:Email:

Payment Details: Fill in the form and send to Subscription Officer;

Meg Gadd

Subscription Officer

Victorian Salvia Study Group

82 Devon St, Cheltenham, Vic. 3192

Ph. (03) 95848005 Email: **gm1214.gadd@gmail.com**

☐

1. Cheque / Money Order payable to Victorian Salvia Study Group

☐

2. Direct Deposit: Bendigo Bank BSB 633-000 A/c No: 116846122

Account Name: Victorian Salvia Study Group Branch

Surname & Initial (Admin purposes only)

A form must be completed with all forms of payment

SALVIA PRESENTATION IN TEMORA NSW

Beth Gilchrist, Temora NSW

I invited Lyndi to visit Temora and give a Salvia Presentation to the local Garden Club. With much support from Jillian, they were able to fit us in just after the AGM. They drove the 7 hours plus stops and arrived on the Friday night. Time was limited, we had already arranged a lunch to meet the Garden Club Committee, dinner in our favourite restaurant, The Salvia Presentation which with set up was a full day, a limited look around the town (remembering that Temora is a country town and closes at midday on Saturday for the weekend) and a visit to Betts Garden Centre before leaving for Melbourne on the Monday morning. This is the article I wrote and submitted to the local paper which was printed with photos taken by the Independent. It left quite a buzz, we more than doubled the attendance expected, just hadn't realised the interest. Some came hundreds of kilometres for the afternoon. Thankyou again Lyndi and Jillian.

Salvia Presentation by Lyndi Garnett

The Temora and Districts Garden Club held their August meeting at the Bundawarra Centre in June Road, Temora where there was a Salvia Presentation by Lyndi Garnett of the Victorian Salvia Study Group (VSSG). It was a great success and more than 90 interested gardeners attended from near and far.

The VSSG has been in existence for more than 25 years and Lyndi has been the Co-ordinator for all that time. Recently the VSSG made a break from the parent organisation and will continue on their own. Last month was the Inaugural Annual General Meeting and Lyndi is again the Co-ordinator of the Group, and Jillian Barkell who is a propagator for the Group amongst other things is now officially her Assistant Co-ordinator.

The Study Group aims to grow and collect Salvias for the purpose of enjoyment and study, promote and encourage the growing of Salvia, correctly name existing and new Salvias and to maintain their Display Garden at Nobelius Heritage Park in Emerald Victoria. These days they also manage a website and Facebook page.

Salvias are a natural habitat and important source of nectar for birds, bees, butterflies and insect. There are over 900 different species of Salvia in the world today and approximately 400 species and cultivars in Australia, something for almost every situation in your garden. There are so many colours and plant sizes too. Strong scented Salvias also seem to be unattractive to grazing animals. Many leaf eating and sap sucking insects are repelled by the scent too especially the strongly scented ones making them great companion plants.

Lyndi's power point presentation included loads of individual Salvias telling a little about each one. She also spoke briefly about propagating which interests most gardeners and the different ways of pruning Salvias.

As we live in an area with such weather extremities, she mentioned those frost tender and advised that most are drought hardy once established. When your Salvias have been frost bitten, she suggests that blackened plants should be left until you can see new growth coming, then and only then they can be trimmed back.

The Salvia Study Group have a Display Garden in Emerald in Victoria that is open to everyone to wander. Except when there are new plantings where water crystals are used in the planting hole and the plant is watered in, the plants thereafter have to survive on natural rain only. As a Study Group it is necessary to see how they survive and how well they do. After a particular dry Summer, when the first rains give way, it isn't long before there is new growth and soon after they burst into flower giving a wonderful show.

Lyndi and Jillian also had Salvia Plants for sale, together with Salvia books and cards. Everyone received a brochure and bookmark to show just a few of the Salvias available and a contact should anyone have any queries.

The Temora and Districts Garden Club always have a raffle and this month there were more prizes than usual, many were salvias for the lucky winners.

To finish the day there was a cuppa and scrumptious afternoon tea and everyone got to chat.

What a great day for the Club and all the wonderful guests many of whom came from afar.

Special thankyou to Lyndi and Jillian. Thankyou too to the volunteers Margaret, Jean and Eddie at the Bundawarra Centre, Ann from the Tourist Centre, Kate Slapp, Amanda Gaye of the Shire of Temora, Jean Groth of Temora Community Radio and Chris Betts of Gardens on Gallipoli for their support.

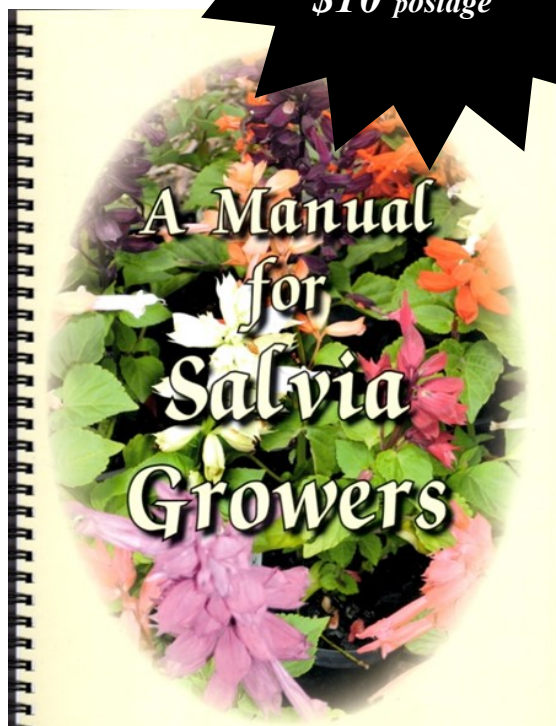
A MANUAL FOR SALVIA GROWERS

by Meg Bentley

There are now approximately
370 Species and Cultivars represented,
202 Photographs, Illustrations and Index

Contents include:

- Botany of Salvia
- Characteristics of Leaves
- Salvia microphylla & greggii differences
- Salvia karwinskii and cultivars
- Purple Majesty and Black Knight
- Salvia Maintenance
- Hardy Salvias and Shade Lovers
- Containers/Hanging Baskets/Hedges
- As an Accent in the Garden
- Propagating and Pruning
- Colourful Tints of Stressed Leaves
- Pests and Disease
- Where to see Salvias
- Cultivation Notes and Name Changes



\$30 / copy
Plus
\$10 postage

A Manual for Salvia Growers *by Meg Bentley*

Cost: \$30 + \$10 P/P per copy
Cheque only made out to:
Victorian Salvia Study Group

Victorian Salvia Study Group
6 Halcyon Avenue
The Patch Vic 3792

(Postage rates given for within Australia)

Phone (03) 9756 6361

Salvia Manual

Quantity:

Total: \$.....

PLEASE PRINT

Name:

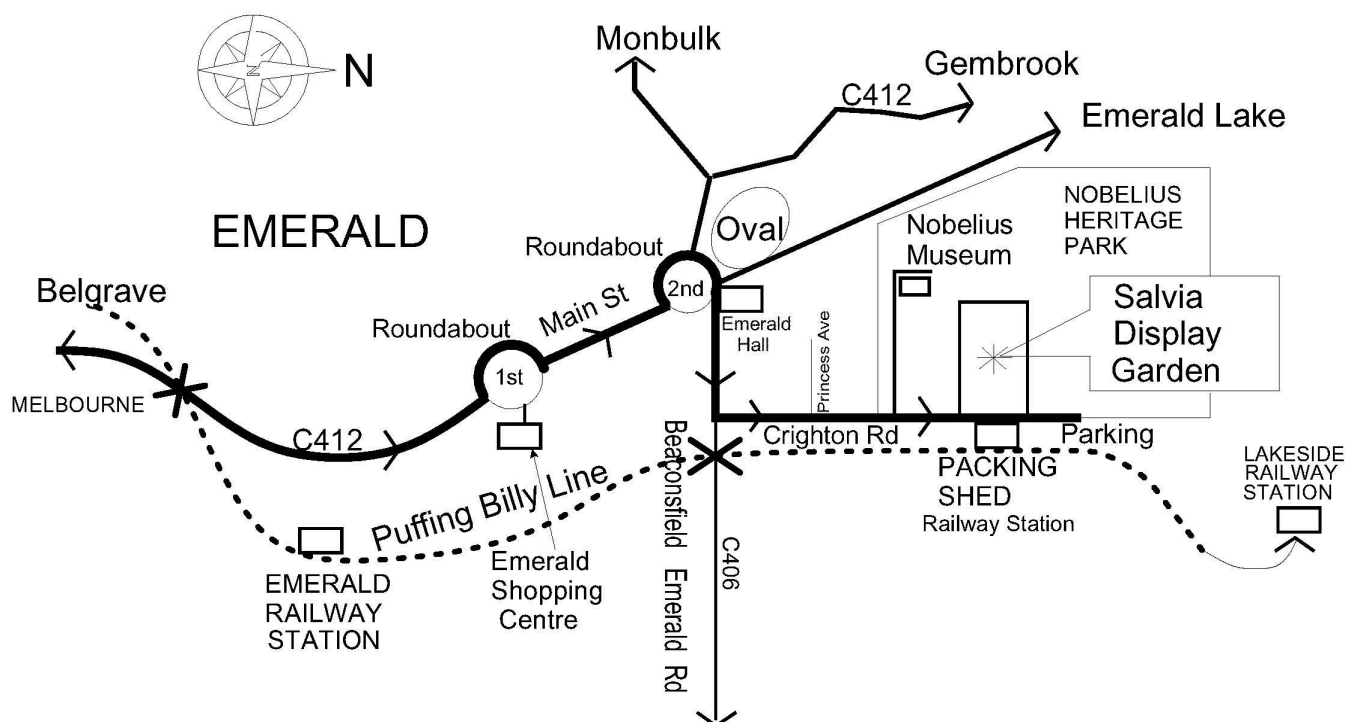
Address:

.....**Post Code:**

Daytime contact phone number

Victorian Salvia Study Group
c/- Lyndi Garnett
844 Highbury Road
Glen Waverley Vic 3150

DIRECTIONS TO THE SALVIA DISPLAY GARDEN



ISSN 2208-1089 (Online)

Salvia News is printed by
Apple Print
702 High Street Road, Glen Waverley Vic 3150